

Anderston Then & Now

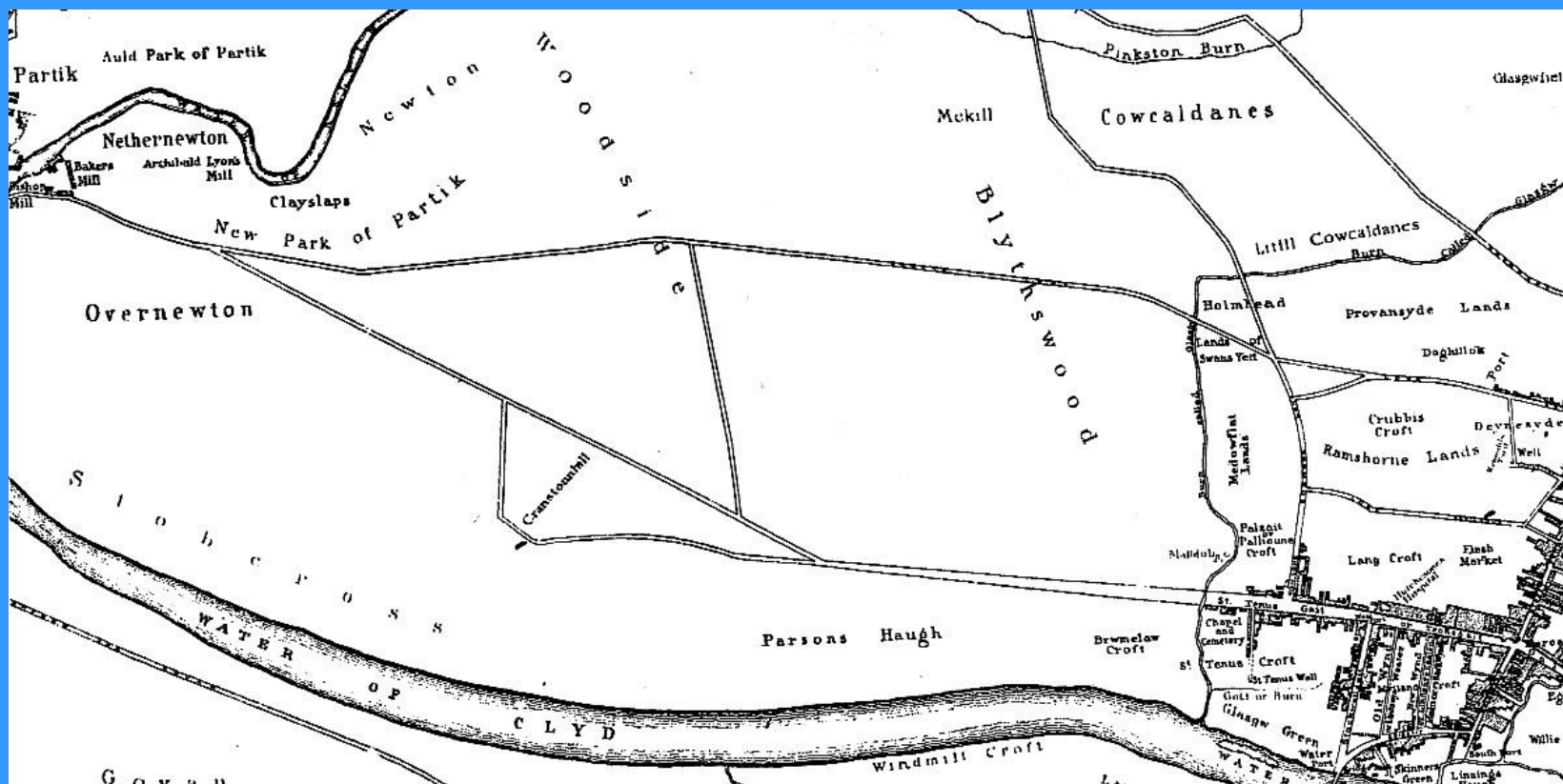
John N. Cooper



Anderston Cross (c1920)



Bleau's map 1654



Map of Stobcross area c1650



Mansion and Estate of Stobcross (c1760)



**John Orr
of Barrowfield**

*Orr purchased the
Estate of Stobcross
in 1735*



**Peden Cross
(1856-1971)**
*This property stood
on the corner of
Argyle St. / Elderslie St.*
(Photo 1970)

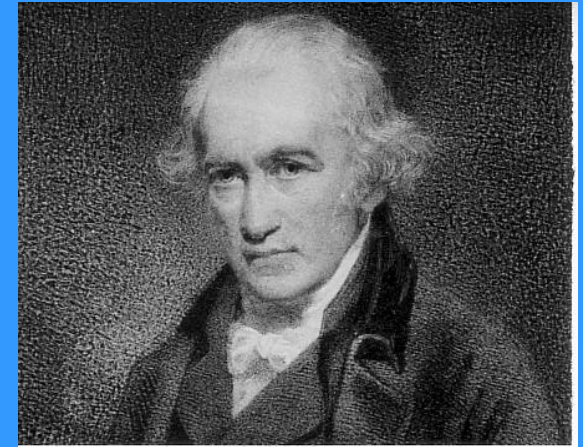




Anderston Weaver's Society
(Founded 3rd Nov. 1738)

Weaver's Pend, 584 Argyle St.
(1960)





**James Watt's
House (c1848)
Delftfield lane**





Verreville Pottery *and* Houldsworth's Mill (c1827)





James Monteith
(1734-1809)
Weaver & Founder of Church



John Geddes
Verreville Pottery &
Anderston Volunteers



Regimental Colour and drum of the Anderston Volunteers.

*Wording on the top scroll: 'ANDERSTON VOLUNTEERS'
and on the lower scroll: 'PRO REGE ET PATRIA' (For King and Country)
(3rd Local Lanarkshire Militia)*



Anderston Brewery (1769-1803)

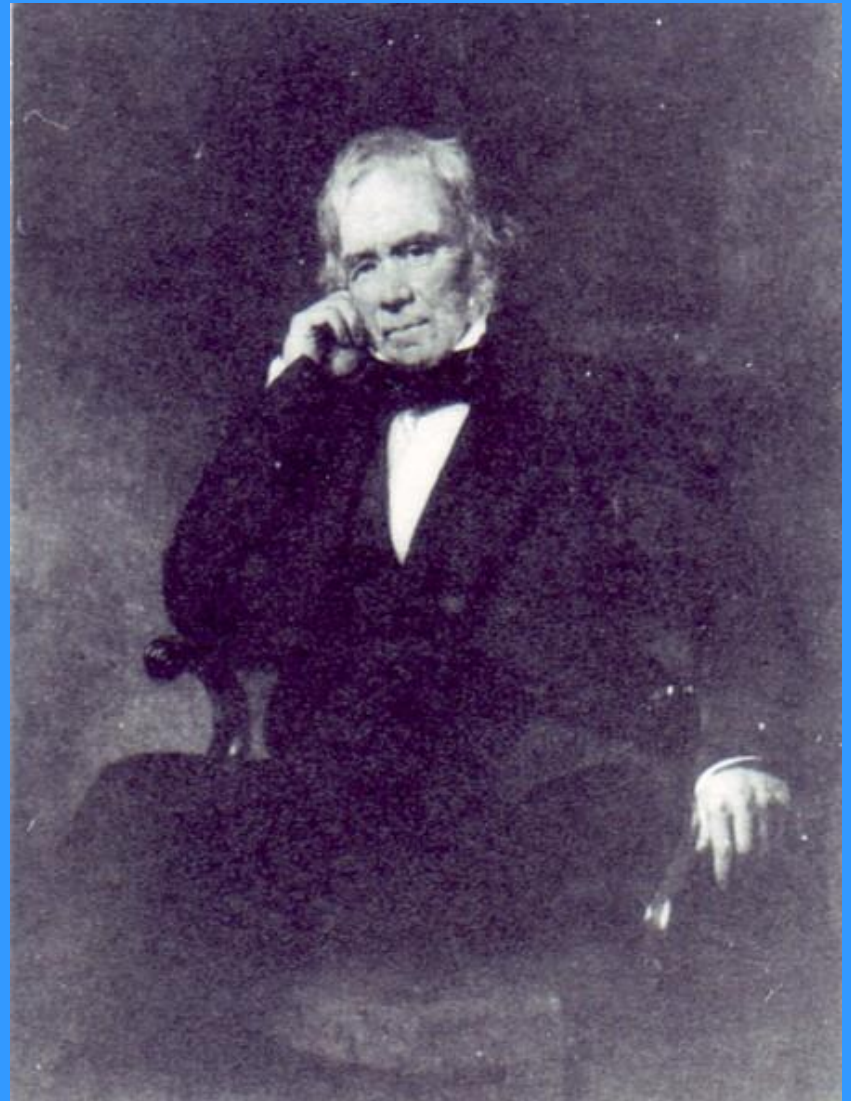


Anderston Brewery and Houldsworth's Mill
viewed from the Clyde (1802)



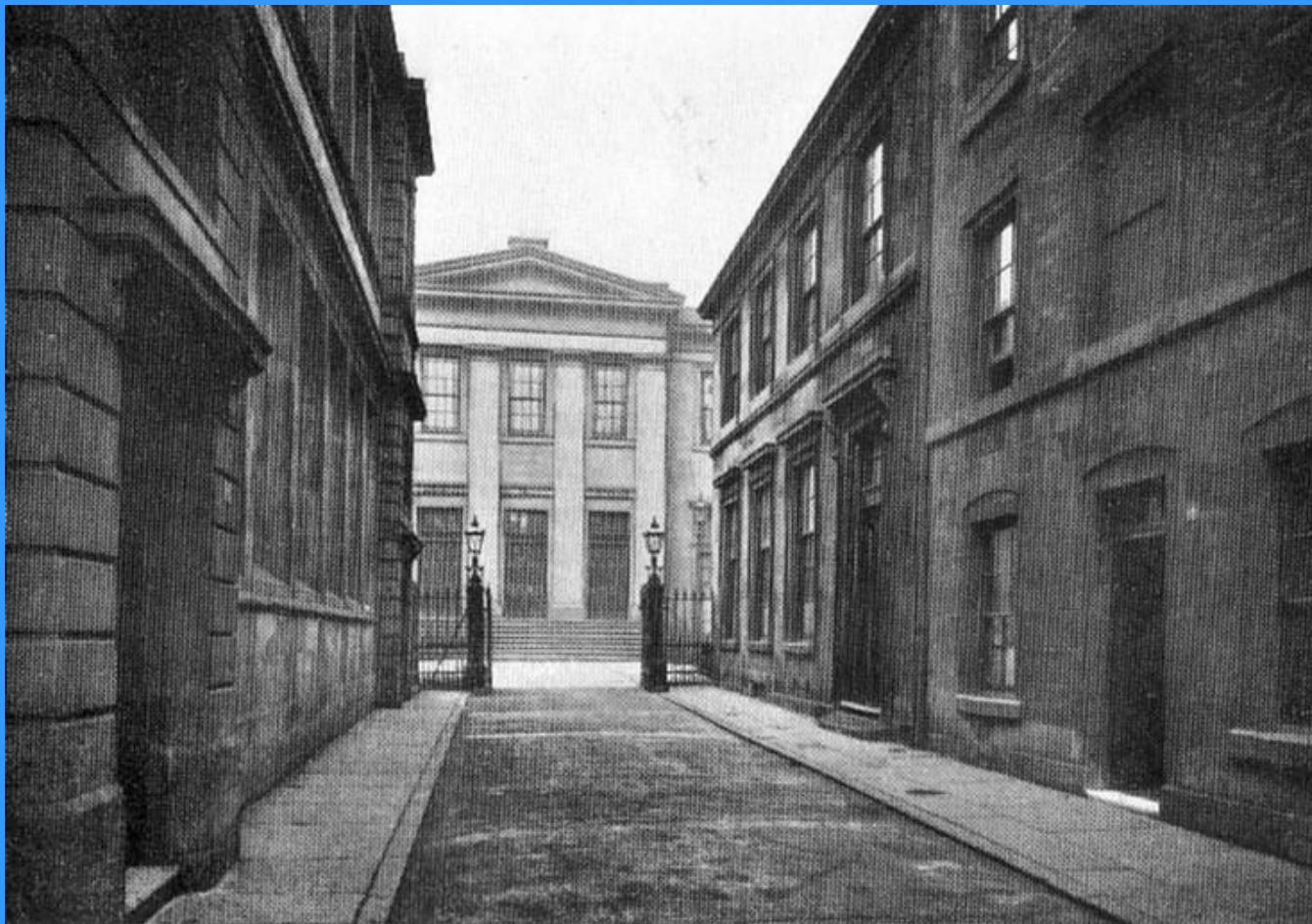
*Arms of the
Burgh of Anderston*

Henry Houldsworth





Former Coach House, 1125 Argyle Street (2005)



Anderston Old (1770-1966)
Heddle Place (*photo c1919*)



Main Street, Anderston (c1863)



Main Street, Anderston (c1863)



Stobcross Mansion (c1870)



Then *and* Now

Finnieston Cross (c1870)

Minerva Street (2004)





Finnieston Cross (c1895)



Finnieston Cross (c1910)



Argyle Street at Finnieston – c1920
(looking towards St Vincent Street)



Anderston & St. Peter's, Argyle Street *and* St. Vincent Street (c1910)
(viewed from the west)



Elderslie Street (*Peden Cross*) c1910

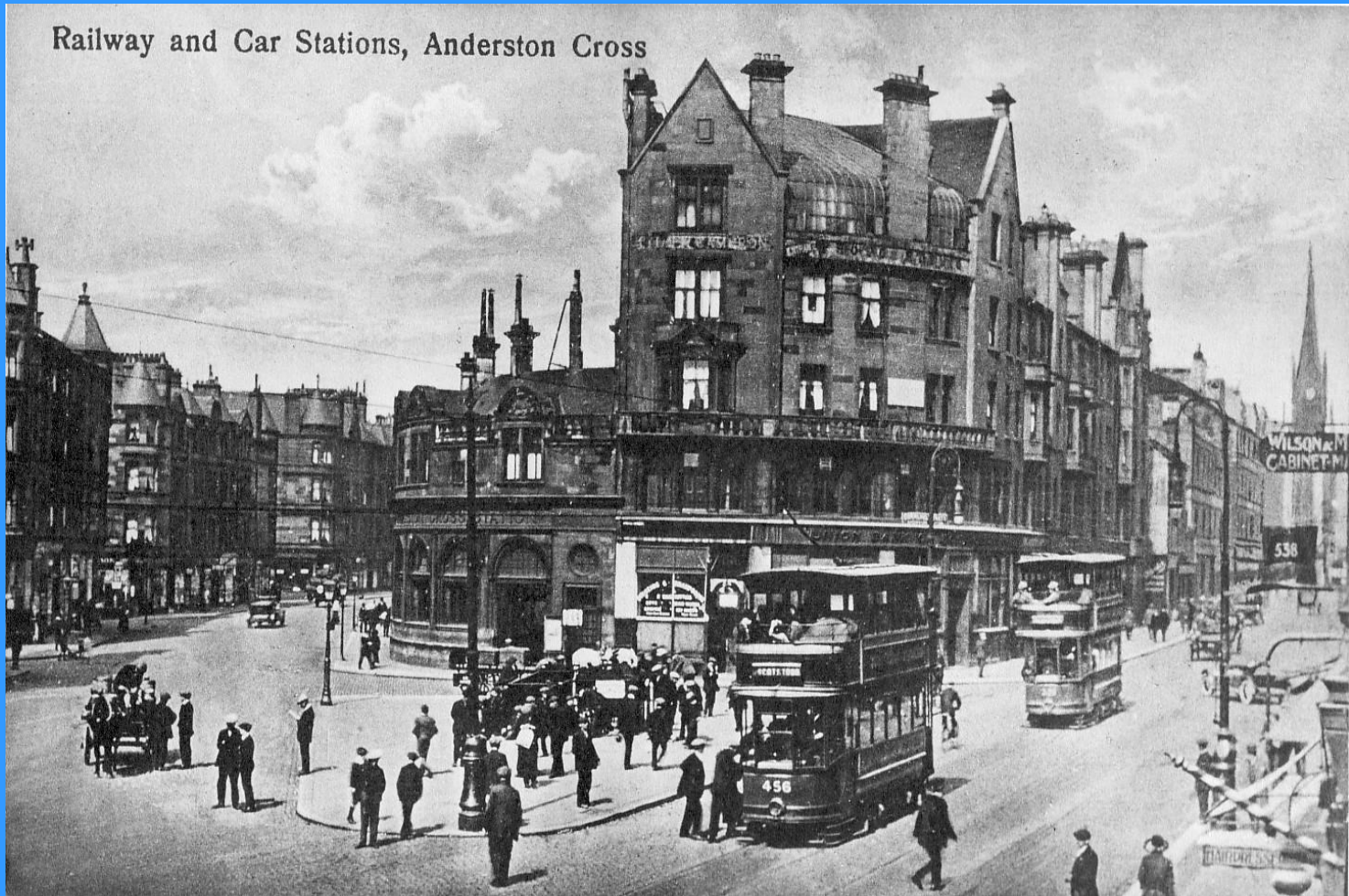


Argyle Street and St. Marks U.F. -1910
(looking east towards Anderston Cross)



Argyle Street – c1920
(looking west)

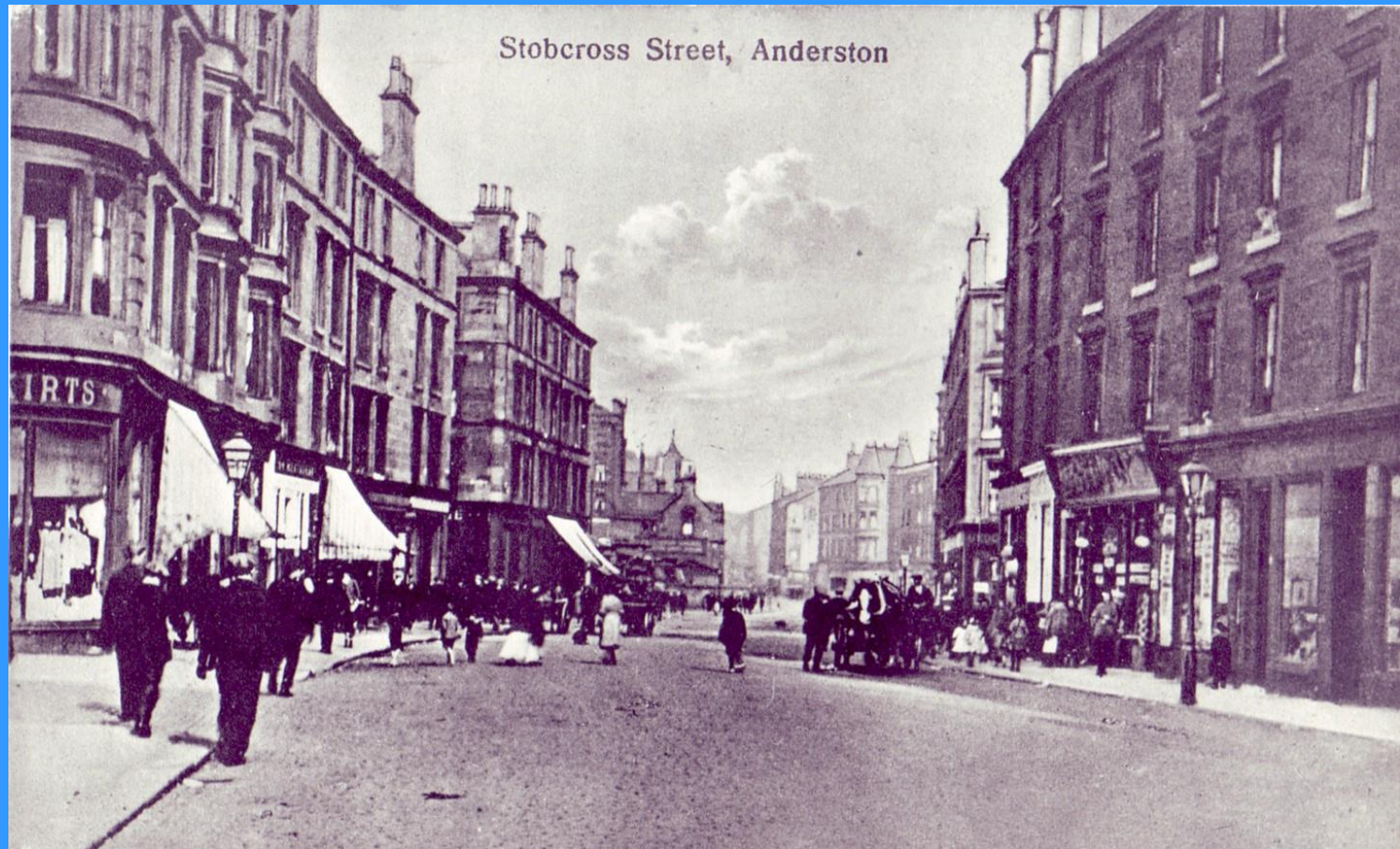
Railway and Car Stations, Anderston Cross



Anderston Cross (c1920)



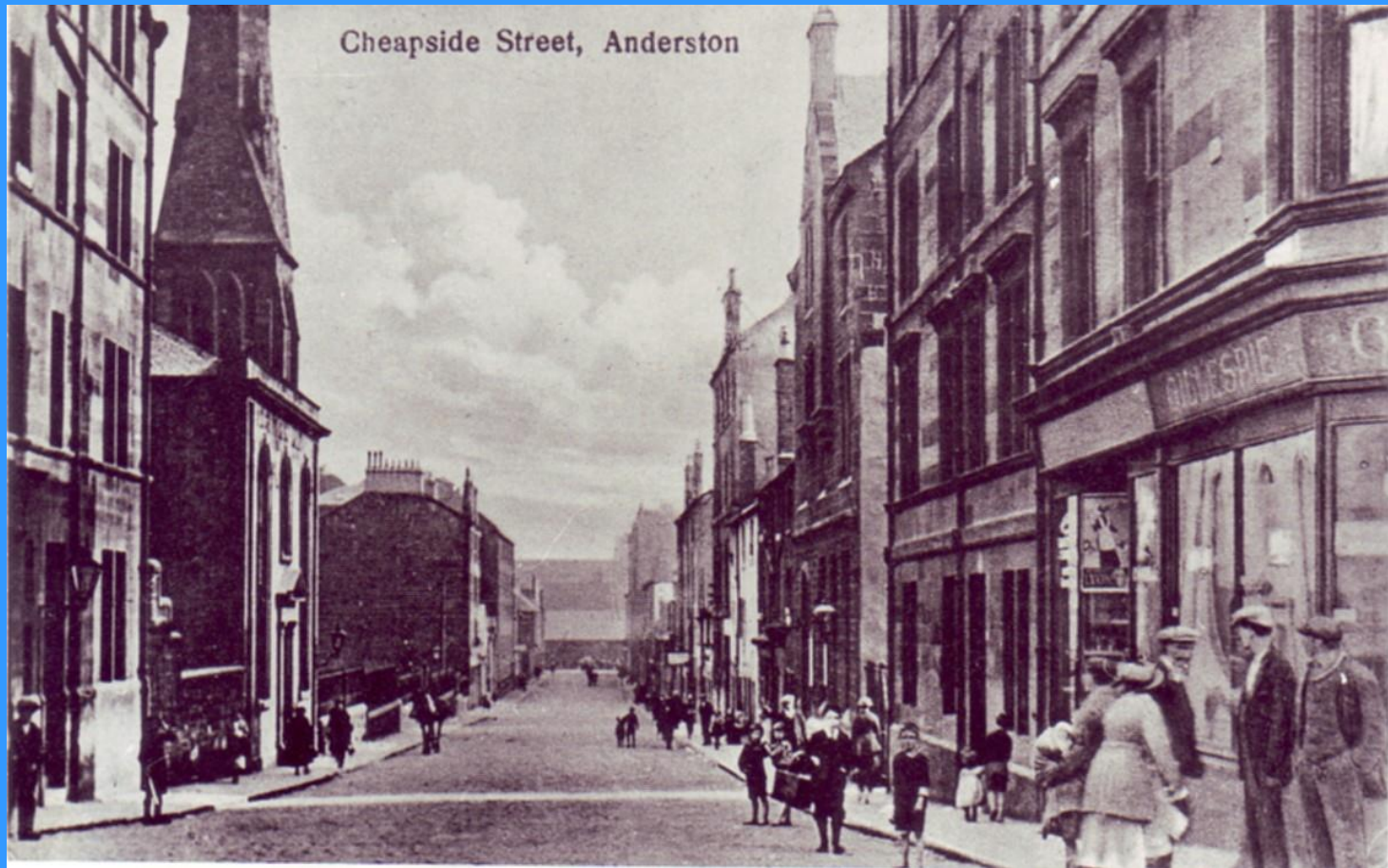
Anderston Cross – c1920
(looking east)



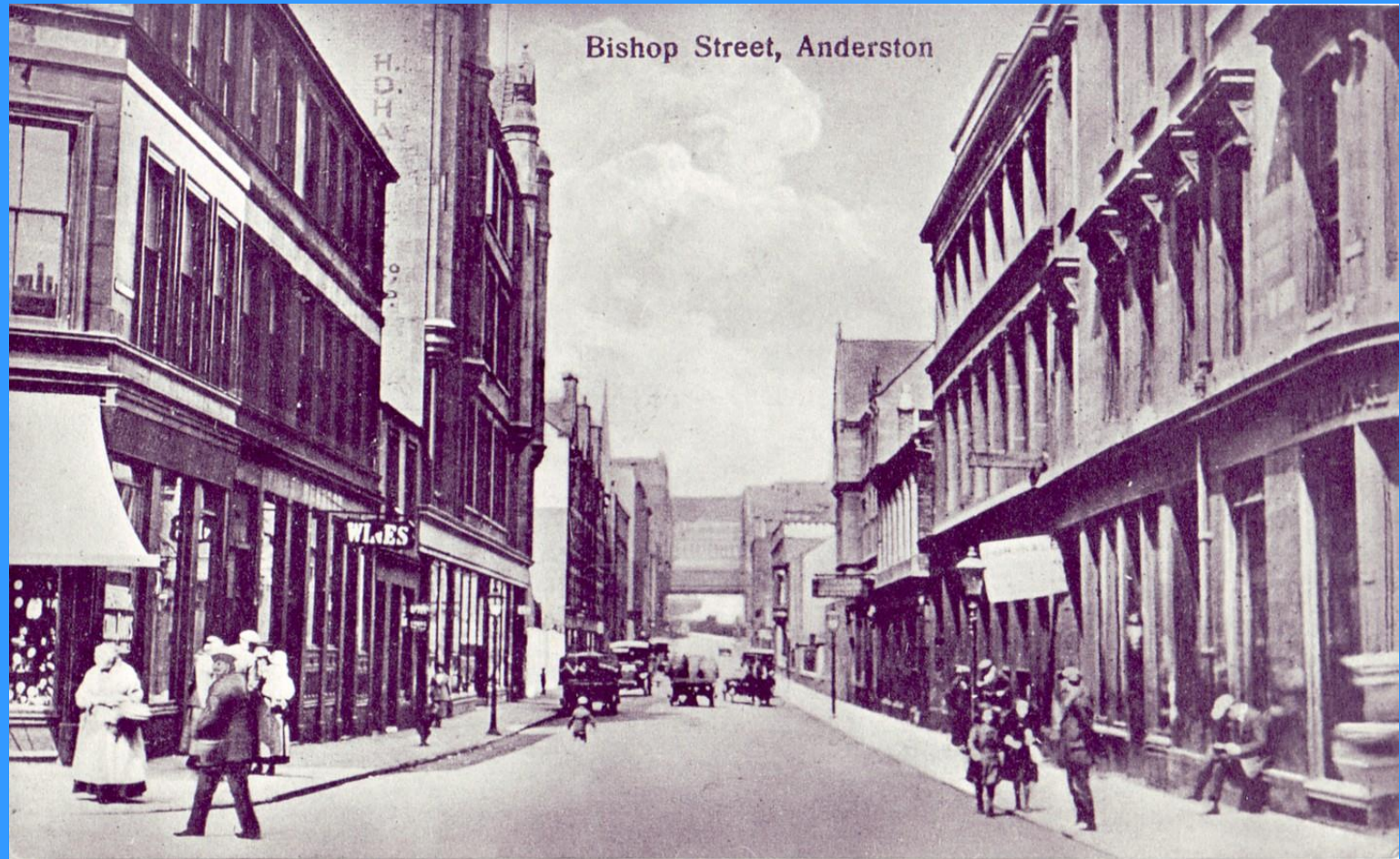
Stobcross Street – c1920
(looking towards Anderston Cross)



Stobcross Street – c1920
(looking west towards Finnieston)



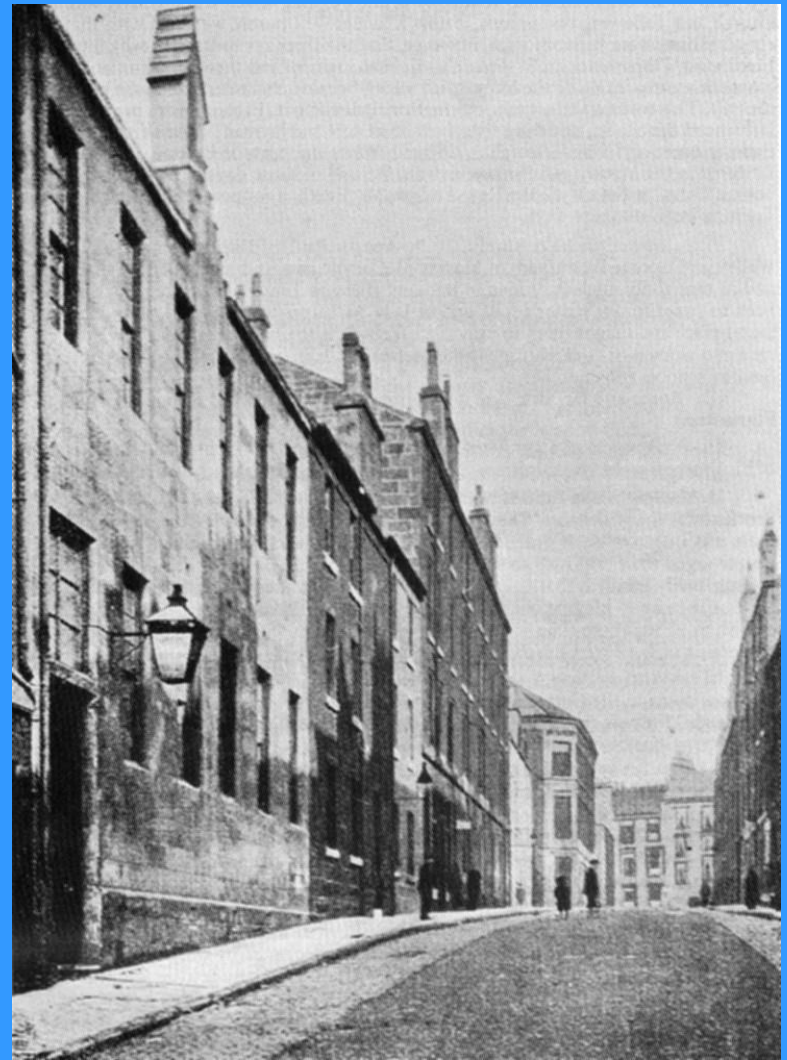
Cheapside Street – c 1920
(view south from Stobcross Street)



Bishop Street – c1920
(looking north from Argyle Street)

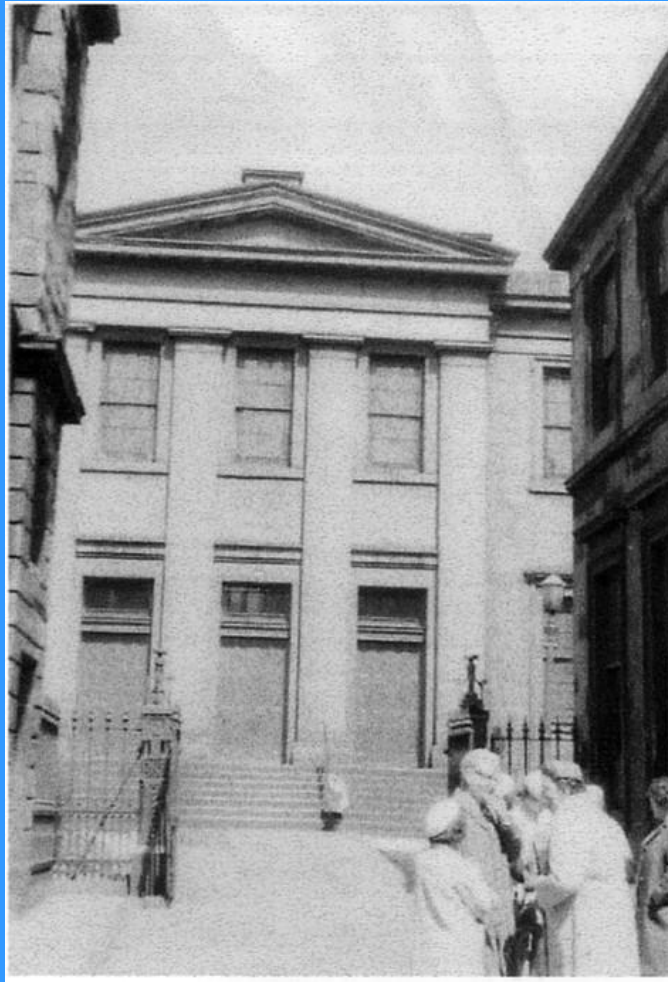


**Robert Dunlop
and
Grace Street Mission
(1849-1962)**





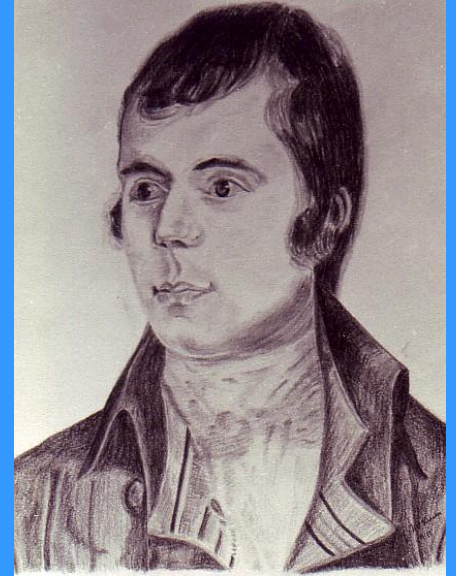
St. John's Episcopal Church (1850-1961)
Argyle Street at Houldsworth Street (*Photo 1970*)



Anderston Old, Heddle Place *and* the Original Manse
(Photo 1961)

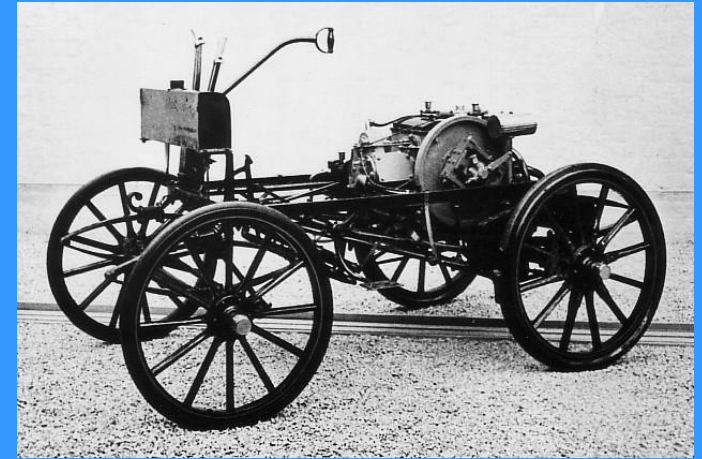


Cranstonhill c1856

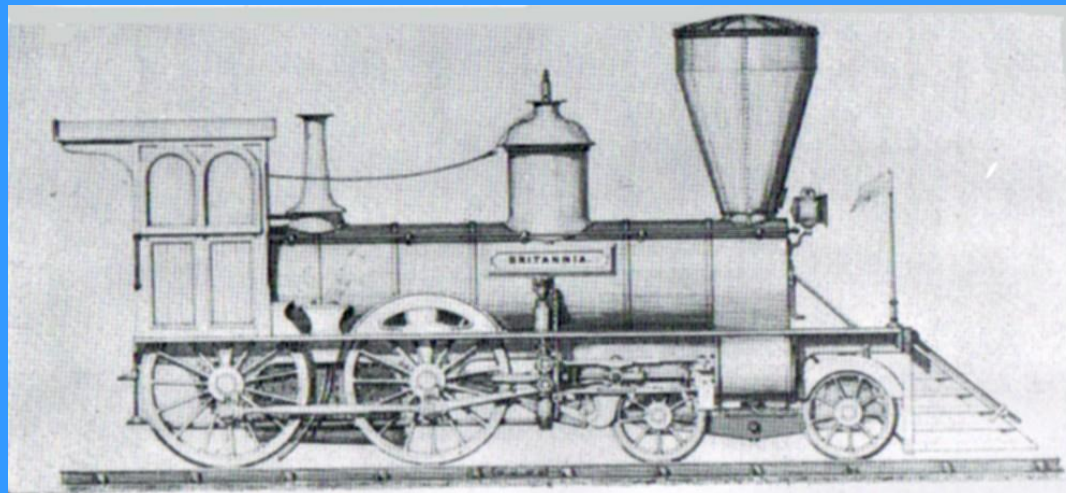


The Anderston Connection





Barclay Curle (1852) Albion chassis (1900)
Neilson & Co. Hyde Park Locomotive (c1850)





Dr. William Somerville *and* The Girls' Guildry (1900)



32nd Glasgow Company Boys' Brigade

1888 – Band at Strachur, Argyll
1926 - Piccadilly Street, Anderston
1983 – Company Band
(Anderston-Kelvingrove Church)





Anderston & St. Peter's (1865-1971)
Viewed from Argyle Street - 1960



St Vincent Street -2003
(looking east towards Elderslie Street)



Then and Now

**Argyle St. /
St. Vincent Street**

(Photos 1960 and 2003)





Then *and* Now
Argyle Street
(Photos 1960 and 2003)



Buchanan's Horse *and* Cart (1969)



Weaving Mill, Cheapside Street (1969)



Old Cottages, 470-504 Argyle Street (1960)



Argyle Street at Pitt Street (1960)



Argyle Street (Pitt St./Douglas St.) – 1959 (north side)



Anderston Centre 1970



Then and Now
Argyle St.
(Pitt St. / Douglas St.)
(Photos 1960 and 1971)





Argyle Street at Blythswood Street (1960)



Then *and* Now
Argyle St. /Blythswood St .
(Photos 1960 and 2004)





St Mark's, Cheapside Street (1835-1962)
(Photo 1960)



Then and Now

Brownfield Church (1835-1962)

Brown Street

(Photos 1958 & 2006)



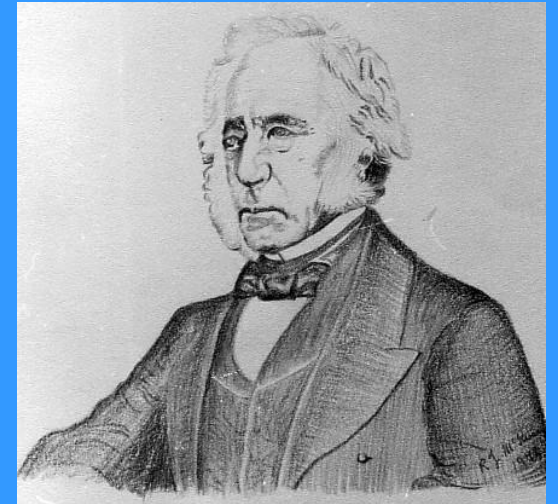
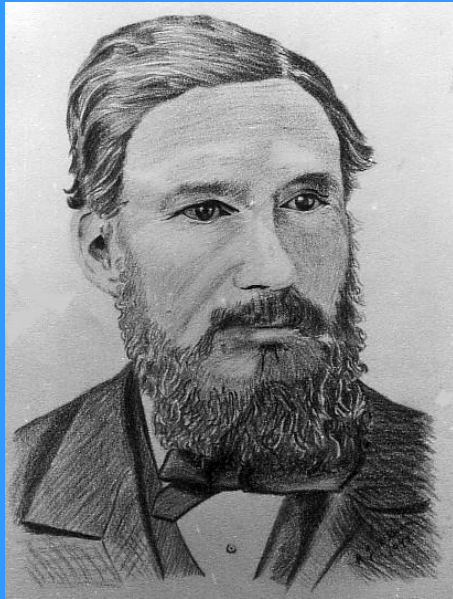
Seamen's Bethel, Brown Street (1825-1971)
(Photo 1969)



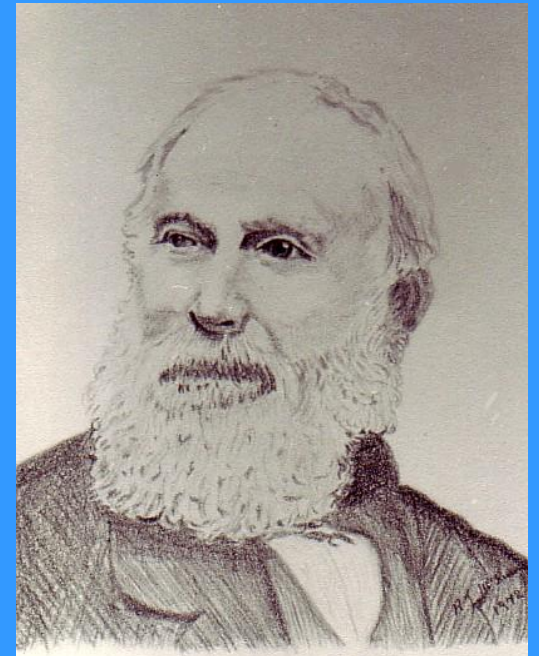
Seamen's Bethel, Brown Street / Broomielaw (1969)



St Peters *and* The Old Scots Kirk, Oswald Street (c1910)



The Anderston Connection





Then and Now

***Demolition of old tenements
and the property that replaced them
at 641-649 Argyle Street***

(Photos 1969 and 2004)





The Buttery, 652 Argyle Street - 2004
(Tenement erected 1869)



Then *and* Now
Finnieston Ferry (1969)
Squinty Bridge (2007)



Then *and* Now
Anderston Quay
(Photos 1960 and 2004)





Then *and* Now
Anderston Quay
‘Daily Record Building’
(Photos 1970 and 2004)





Napier's Hydepark Windlass Engine Works (1969)



Hydepark Street (1970)



Cranstonhill Fire Station (c1920)



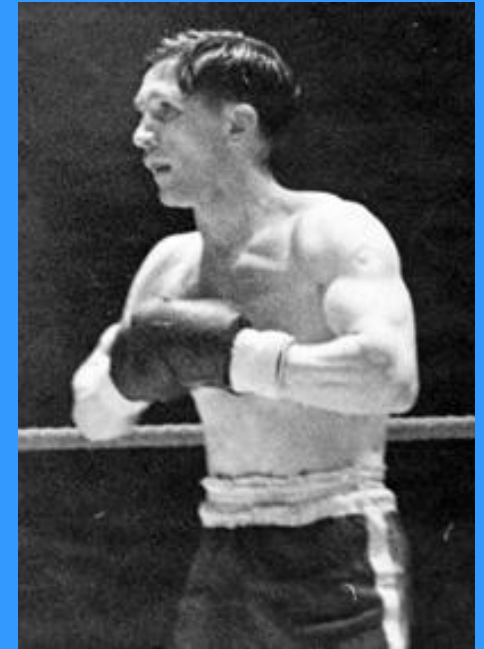
Cranstonhill Fire Station, Cranston Street (1859-1970)
(Photo 1969)



Cranstonhill Baths *and* 'The Steamie' (1883-1971)
(Photo 1969)



Bishop St. School (1954) *Spot - Tony Roper*



The Anderston Connection



William Street Clinic (1970)
(Formerly Free St Matthew's School - 1844)



Then *and* Now
Corner of Argyle St./Elderslie St.
(*Peden Cross*)
(*Photos 1970 and 2006*)

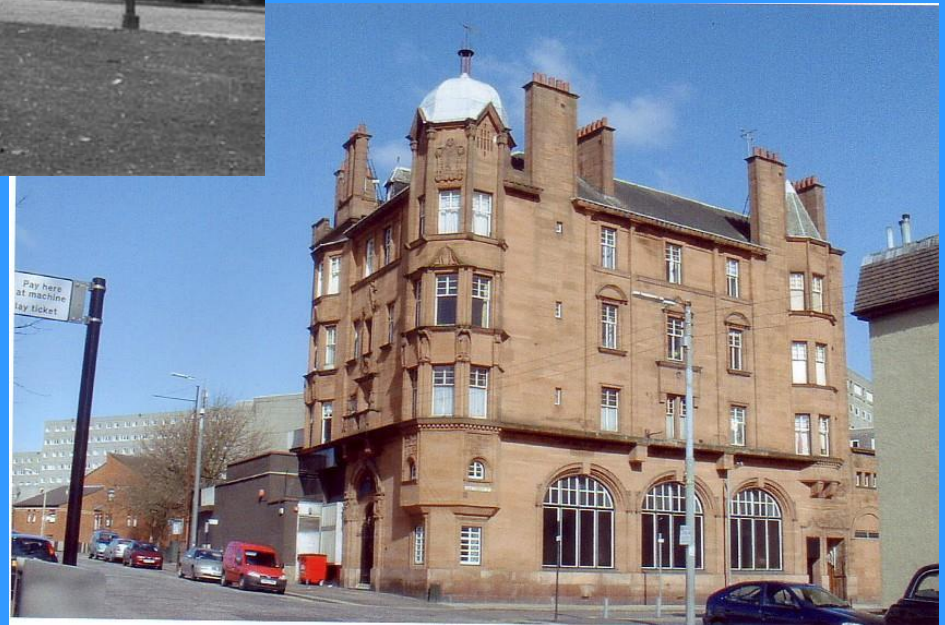


Cranstonhill (1970)



Then *and* Now
Savings Bank (1900),
Argyle St./Shaftsbury St.

(Photos 1969 & 2004)





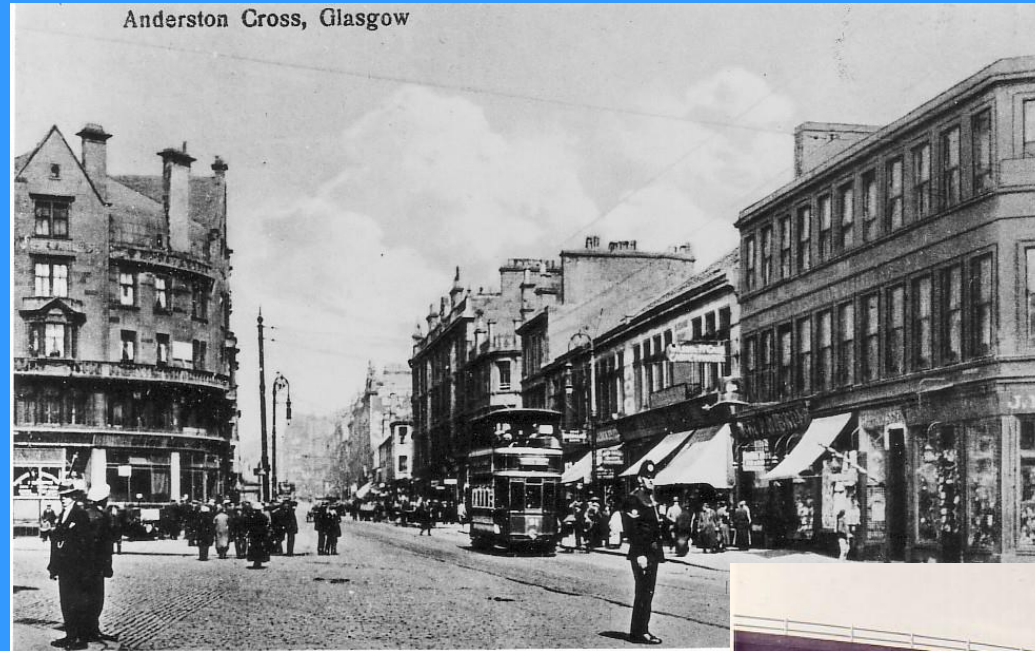
Elliot Street (2005)



Then and Now

***789-797 Argyle Street
and built on the same site
Anderston Kelvingrove Church***

(Photos 1958 and 2003)



Then and Now
Anderston Cross
(Photos 1920 and 1970)





Then *and* Now
Argyle Street
(Photos 1959 and 2004)



Argyle Street – Sometime in the future?



The Kingston Bridge (2007)



Then *and* Now
Clydeside *and* the Finnieston Crane
(Photos 1969 and 2004)





The Waverley *at* Anderston (2004)



Stobcross – The Clyde Auditorium (*The Armadillo*) 2004



Then *and* Now

‘Stobcross’

Mansion c1760

Armadillo 2004



ALTER ALTERIUS AUXILIO VEGET

The one flourishes by the help of the other

